

MURPHYSBORO SIDEWALK INVENTORY

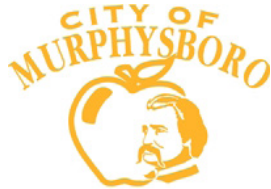


March 2020

ACKNOWLEDGMENTS

About the Illinois State Physical Activity and Nutrition Program

The Illinois State Physical Activity and Nutrition program is made possible with funding from the Centers for Disease Control and Prevention and administered by the Illinois Public Health Institute in collaboration with partners in the Illinois Alliance to Prevent Obesity.



About this Project

The Jackson County Health Department (JCHD) and Active Transportation Alliance (Active Trans) worked with the City of Murphysboro in the summer of 2019 to develop a Sidewalk Inventory and Condition Analysis. The project intent was to provide the city with a list of sidewalks segments and blocks to prioritize for newly constructed or re-constructed sidewalks.

Walkability Assessment Project Team

Mayor Will Stephens

Angie Kuehl, Jackson County Health Department

Kathryn Bernstein, Illinois Public Health Institute

Sarah Chusid, Illinois Public Health Institute

Melody Geraci, Active Transportation Alliance

Michelle McLernon, Jackson County Health Department

Maggie Melin, Active Transportation Alliance

Heather Schady, Active Transportation Alliance

Walkability Assessment Volunteers

Kaitlyn Baltzell

Patty Bateman

Denise Brown

Logan Dailey

Jessica Davis

Jamie Green

Tage Green

Karla Grathler

Bart Hagston

Tracy Hagston

Linda Herrold

Heather Jennings

Kent Jennings

Angie King

Mackenzie Kolek

Shirley Krienert

Cynthia Roth

Alicia Shetter

Patricia Shetter

Andrea Stephens

Cynthia York-Camden

MURPHYSBORO

Sidewalk Inventory

1. WHAT MAKES A WALKABLE CITY?	4
2. BENEFITS OF A WALKABLE CITY?	6
3. CREATING A WALKABLE MURPHYSBORO	8
4. DATA COLLECTION & RESULTS	10
5. ACTION PLAN & PRIORITIES	18

1

WHAT MAKES A WALKABLE CITY?

A selection of tools used by walkable communities



CROSSWALKS, CURB RAMPS, DETECTABLE WARNING PADS

Designate space for pedestrian crossings and alert drivers to priority crossing areas. Provide accessible crossings for people with visual impairments and people in wheelchairs.



SIDEWALKS

Create a dedicated space for pedestrians to travel free from vehicles. Sidewalks should be at least 5' wide, 8' in commercial areas. Provide a buffer between the street and sidewalk to further protect pedestrians.



COUNTDOWN TIMER

Indicate the amount of time pedestrians have to cross a street at a signalized intersection.



LIGHTING

Make pedestrians more visible to drivers and improve perception of personal safety. Indicates high-priority pedestrian areas and supports business districts.



TRIMMING AND LANDSCAPING MAINTENANCE

Landscaping can encroach sidewalks, impacting accessibility. Ensure landscaping adjacent to sidewalks is maintained.



INFRASTRUCTURE MAINTENANCE

Develop a maintenance plan to ensure they continue to be safe and usable for pedestrians.



STREET TREES

Provide shade in the summer and a buffer from vehicle traffic.

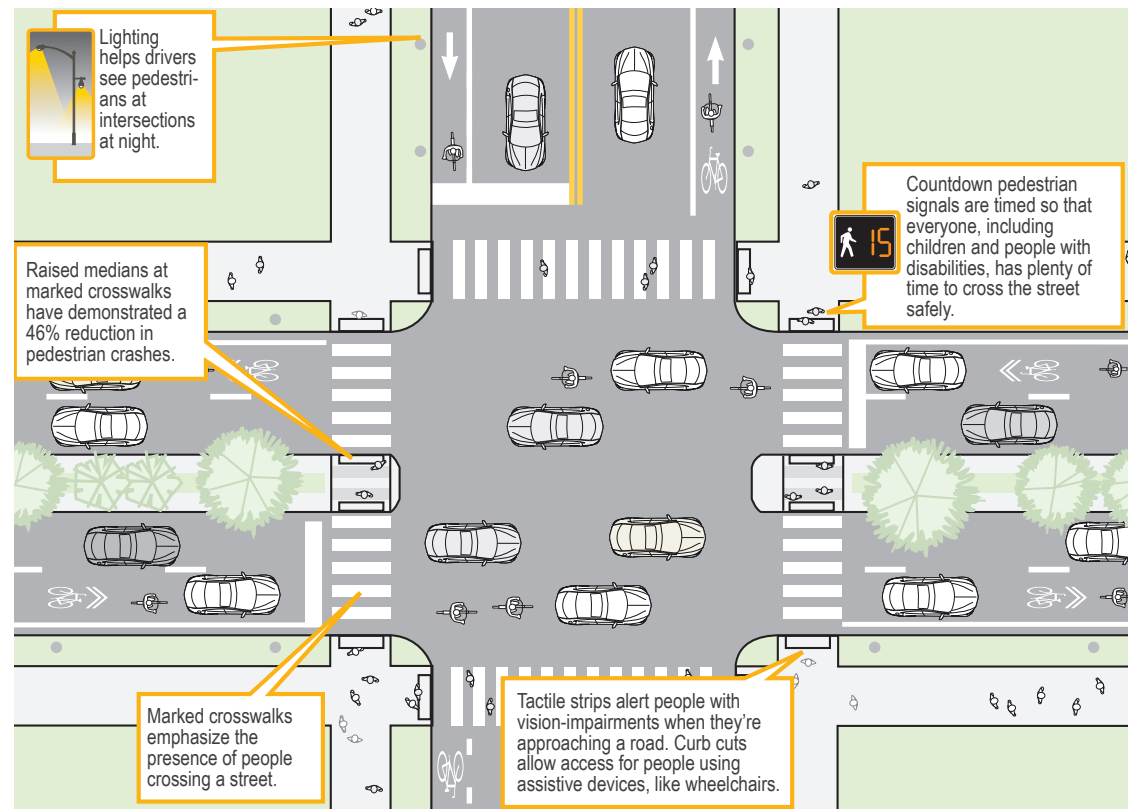
Walkable communities have a density and variety of destinations within walking distance of residential areas and streets that feel safe and comfortable for people of all ages and abilities to walk along and across.

For decades, communities have prioritized automobile travel over pedestrians, creating environments that are inaccessible and unsafe for most people to walk. A connected and well-maintained sidewalk network is a critical component of a walkable community; however, a lack of funding, deferred maintenance, local zoning policies, and easements have impacted all communities' ability to build and maintain sidewalks.

A walkable street network has continuous sidewalks free from obstructions, and tripping hazards, curb ramps and detectable warning pads at every intersection, well-marked crossings, traffic signals that indicate when pedestrians can cross and provide adequate time for people of all abilities to do so, lighting, benches and street trees.

This plan focuses on sidewalk condition and presence, which is a starting point for Murphysboro to improve conditions for pedestrians.

Anatomy of a walkable intersection



2

BENEFITS OF A WALKABLE CITY

In most communities, the built environment is not designed to encourage walking trips. Despite this challenge, there is a growing consensus that communities want better walking infrastructure.

Providing safe walking, biking, and transit options is especially important for people who cannot drive or do not have access to a car, including low-income people, children, seniors, and people with disabilities. When infrastructure is provided that serves the highest need populations, everyone in a community benefits in many ways.



Families walking on Walnut Street
Image courtesy of Angie Kuehl.

Everyone benefits from a walkable community



Nearly 20% of trips are shorter than 1 mile in non-urban areas, an easy walking distance for most people, which would enable them to get more **physical activity**.



Pedestrian and bicycle construction projects **create more jobs** per dollar than any other type of infrastructure spending.



An American Heart Association study found that every dollar spent on building paths for walking or biking saves \$3 in **medical costs**.



Trails bring in millions of dollars annually through **tourism** that goes directly into the communities that are home to them.

Communities that are designed to encourage walking are healthier, happier, and more equitable. Walkable communities attract more investment, more visitors, and produce more jobs.

3

CREATING A WALKABLE MURPHYSBORO



Downtown Murphysboro
Image courtesy of Angie Kuehl.

Murphysboro has the perfect bones of a walkable community. Most of its streets are gridded, providing easy access to most destinations like its quaint downtown, community schools, and lush Riverside Park.

Despite its assets, the availability, quality and condition of the sidewalk network impact residents' ability to walk to reach destinations. Residents report challenges like gaps in the sidewalk network and the condition of the existing network.

This plan seeks to provide the City of Murphysboro a framework for improving its sidewalk network in the following ways:

- Analyze gaps in the sidewalk network
- Rate the condition of existing sidewalks
- Identify where to prioritize improvements
- Provide next steps for implementation

Developing a city-wide sidewalk inventory and condition assessment was a recommendation in Murphysboro's Comprehensive Plan and is a continuation of an assessment conducted by Southern Illinois Metropolitan Planning Organization (SIMPO) in 2014. It is also consistent with Jackson County's Community Health Improvement Plan and its Rural Planning Playbook.

Sidewalk Inventory Map



2014 Sidewalk Inventory on major streets conducted by the Southern Illinois Metropolitan Planning Organization
Image courtesy of Murphysboro Comprehensive Plan

4

DATA COLLECTION & RESULTS



Murphysboro Youth and Recreation

The presence and condition of sidewalks in Murphysboro varies from house to house, block to block. In order to understand the problem and identify priority areas, the project team and local volunteers recorded the presence and condition of sidewalks on each block in the city.

DATA COLLECTION

The project team sought to use both a technical and volunteer supported approach centered on the following objectives:

Develop a sidewalk network base map

The team developed the initial sidewalk and crosswalk base map using the Illinois Roadway Inventory System road centerline files maintained by the Illinois Department of Transportation. Using ArcGIS, the team created parallel lines 20-feet away from each centerline, to serve as a proxy for the width of lanes and the width of the sidewalk buffer common on most of Murphysboro Streets.

Identify gaps in the sidewalk network

The initial gap analysis was developed using aerial imagery from Google Maps and Google Street View. Google aerial imagery was taken in 2019, whereas the Street View images were captured in 2012 or 2016, depending on the location in town. Since the Street View data is several years old, the team verified conditions using the more recent aerial imagery. Some segments were covered by the tree canopy and were indecipherable.

Assess the condition of the existing sidewalk network

The project team also analyzed the condition of existing sidewalk segments as they mapped the network. Sidewalks were rated as follows: Excellent, Good, Fair, Poor.


Prioritize areas for sidewalk construction or reconstruction

Following the initial inventory, the project team worked with local officials to determine key destinations within the community to focus sidewalk prioritization.

Field check map for accuracy with volunteers

Since the initial inventory and assessment was conducted virtually, the team opted to work with local volunteers to conduct a field check and verify the inventory. Volunteers were assigned an 8-block area to inspect centered around the key destinations. They were each given the condition map for their respective areas, a visual dictionary to help them assess the condition, and a change order spreadsheet to note where changes should be made to the inventory. Following the field check, the project team updated the inventory to reflect the changes. 31 volunteers assisted in the field check.

MURPHYSBORO SIDEWALK INVENTORY WORKSHEET



INSTRUCTIONS: Each partner should pick a side of the street to walk down. Fill out one worksheet for each side of the street, answering each of the below question. Use your map to confirm the condition and presence and note where changes are needed. If you're not sure how to classify a condition, refer to your visual checklist for guidance. Record any additional observations at the bottom of the worksheet.

1. ABOUT YOUR STREET
 Street Name _____ between _____ and _____
 Side of Street? N S E W Direction you walked? N S E W Walk Area: _____

2. VERIFY THE SIDEWALK PRESENCE
Reference your map and visual dictionary. Is the sidewalk presence correct on the map? Y N

If you answered no, please note which changes are needed and where they are located:

<small>What is incorrect, please select:</small>	<small>Address(es) to change OR entire block:</small>
<input type="checkbox"/> No sidewalks <input type="checkbox"/> Sidewalks are not continuous	_____
<input type="checkbox"/> No sidewalks <input type="checkbox"/> Sidewalks are not continuous	_____

3. VERIFY THE SIDEWALK CONDITION
Reference your map and visual dictionary. Is the sidewalk condition correct on the map? Y N

If you answered no, please note which changes are needed and where they are located:

<small>Change the condition rating to:</small>	<small>Address(es) to change OR entire block:</small>
<input type="checkbox"/> Excellent <input type="checkbox"/> Good <input type="checkbox"/> Fair <input type="checkbox"/> Poor	_____
<input type="checkbox"/> Excellent <input type="checkbox"/> Good <input type="checkbox"/> Fair <input type="checkbox"/> Poor	_____
<input type="checkbox"/> Excellent <input type="checkbox"/> Good <input type="checkbox"/> Fair <input type="checkbox"/> Poor	_____
<input type="checkbox"/> Excellent <input type="checkbox"/> Good <input type="checkbox"/> Fair <input type="checkbox"/> Poor	_____

4. STREET TREES

Are there trees adjacent to the sidewalks that could be impacted by sidewalk construction?

Address(es) OR entire block:

5. INTERSECTION

When you reach the intersection at the end of the block, answer the following:

<small>Change the condition rating to:</small>	<small>Intersection name and side of the street:</small>
<small>The crosswalk is not marked or is poorly marked: Y N</small>	_____
<small>There's no curb ramp at the crossing: Y N</small>	_____
<small>The road is too wide to safely cross: Y N</small>	_____
<small>Parked cars block my view of traffic: Y N</small>	_____
<small>If there is a traffic signal, there is not enough time to cross: Y N</small>	_____
<small>Other observations:</small>	

Walk audit worksheet used by volunteers.



Google Streetview capture of Spencer Street from 2012
 Image courtesy of Google Maps

SIDEWALK GAP ANALYSIS

The project team and volunteers took to Murphysboro's streets to identify where sidewalks are and are not, using three categories to document the presence of sidewalks: continuous sidewalk, gap in sidewalk, no sidewalk. The results are mapped on the following page.

- **Continuous sidewalk:** sidewalk is present along entire block
- **Gap in sidewalk:** sidewalk is present along most of block, ends abruptly, or has missing segments along block
- **No sidewalk:** no sidewalk along entire length of block

FINDINGS

75 linear miles of streets

36% of Murphysboro's streets have sidewalk coverage

1 linear mile of gaps spread across the city

Sidewalk Gap Analysis Definitions



Continuous Sidewalk



Sidewalk Gap



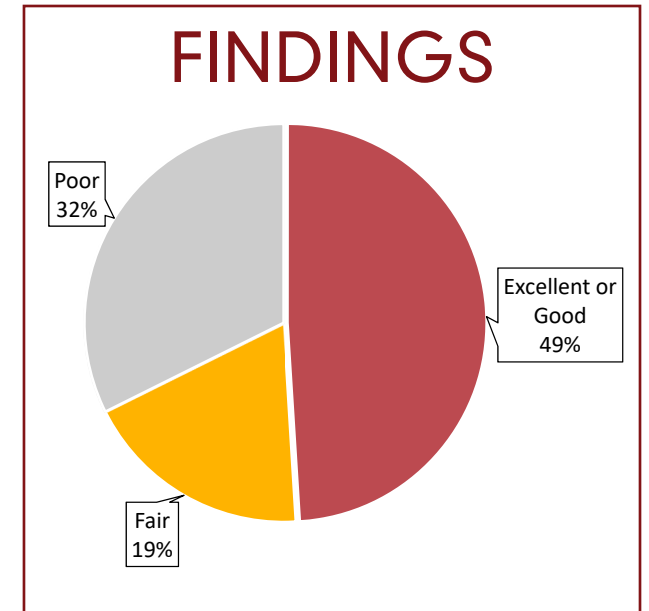
No Sidewalk

SIDEWALK CONDITION ANALYSIS

The project team and volunteers also checked the map to confirm the condition was coded correctly. Four categories were used to classify the sidewalk condition:

- **Excellent:** No cracks, new appearance, well maintained
- **Good:** Some visible wear but otherwise good condition
- **Fair:** Some cracks, clearly visible wear or damage, functional
- **Poor:** Any presence of deep cracks, misaligned, sagging or uplifted **slabs**, **slabs** covered in dirt or weeds

The results are mapped on the following page.



Sidewalk Condition Analysis Definitions



EXCELLENT



GOOD



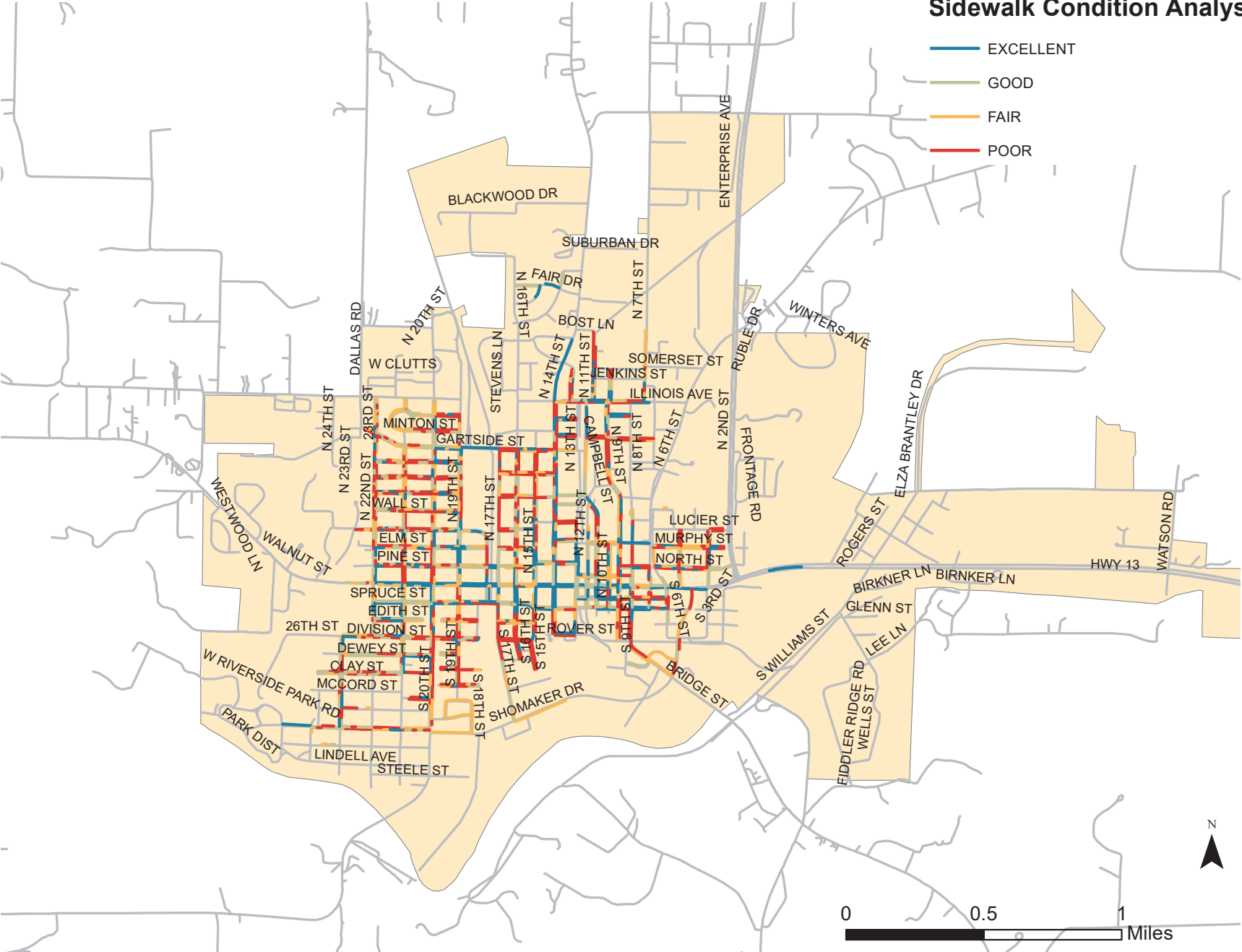
FAIR



POOR

Sidewalk Condition Analysis

- EXCELLENT
- GOOD
- FAIR
- POOR



OPPORTUNITIES FOR FUTURE INVENTORIES

In addition to the above questions, volunteers were also asked to gather the following data on the presence of street trees and intersection conditions:

- **Street Trees:** established trees are adjacent to the sidewalk. The root system may or may not be under the sidewalk.
- **No Street Trees:** no trees are adjacent to the sidewalk.
- **Curb ramps:** found at one or both ends of a sidewalk that taper down toward the street level.
- **Wide Intersection:** long crossing distance over 3+ lanes of traffic.
- **Regular intersection:** shorter crossing, only 2 lanes of traffic, lanes are not wide.
- **High visibility crosswalk:** stripes run perpendicular to the curb ramp.
- **Standard crosswalk:** stripes run parallel to the curb ramp

Due to time constraints, these data were not collected for all intersections and blocks and as a result were not mapped for this study.

Street Tree Definitions



STREET TREES



NO STREET TREES

Intersection Definitions



REGULAR INTERSECTION



STANDARD CROSSWALK



CURB RAMP



WIDE INTERSECTION



NO CROSSWALK



NO CURB RAMP

5

ACTION PLAN & PRIORITIES



Murphysboro walkability volunteers

With limited resources available, there are three critical areas to focus on for sidewalk improvements: access to local destinations, for vulnerable populations, and along high traffic streets.

ACTION PLAN

Plans need stewards to ensure they are implemented and considered within the context of a community's annual capital improvement program. An existing committee or a new committee should be formed to take on the recommendations and:

1. **Identify an annual expenditure to allocate per year** to target grant funding, such as the Illinois Transportation Enhancements Program (ITEP) or Safe Routes to School (SRTS). These programs can help offset 80% of the cost of construction and enable Murphysboro to stretch its budget.
2. **Establish performance goals** such as number of linear feet to target for improvement each year. By setting these goals, the city can think strategically about how to target specific areas for improvement when applying for grant funding.
3. **Develop a list of key projects to pursue each year in high priority locations.** This plan identifies about 25 linear miles of sidewalks in poor condition or with gaps. It is not feasible to improve all miles immediately. A best practice is to target improvements around key destinations. We recommend Murphysboro prioritize sidewalks that provide access to destinations first followed by sidewalks in high need areas of town. Within these

categories, sidewalks located on busier streets (arterials and collectors) should be prioritized over local roads. A list of priority projects and maps start on page 24. As each block is improved, its curb ramps and detectable warning pads should be checked and replaced to ensure accessibility.

4. **Work with SIMPO and IDOT to identify and apply for grants to make progress on implementation of priority projects.** See the table on the following page for more details on funding sources that could be targeted.

5. **Track progress on improvements made.** Develop simple metrics to track the progress of plan implementation, such as number of linear feet constructed per year, number of linear feet improved per year, number of ADA improvements made at intersections. These metrics should be reported annually in a public forum or online.



A stakeholder committee evaluates future improvements

6. **Reassess recommendations to ensure they are meeting the community's needs.** Community preferences and needs change over time. The prioritization model established by this plan should be periodically looked at to see if it's addressing the areas that most need improvement in Murphysboro.

7. **Conduct Basic Maintenance on Sidewalks in Good and Fair Condition.** In many instances, sidewalks that were rated Fair do not need to be replaced. Rather, they could be trimmed or swept of debris. The following actions can be taken to make these improvements:

- Educate residents on the need to maintain sidewalks and regulations regarding sidewalk obstructions. Many sidewalks were blocked by landscaping and could be made accessible through trimming.
- Continue working with the Murphysboro Walkability Squad to identify easy ways to improve sidewalks. Volunteers could help weed between sidewalk segments in the public right-of-way to improve conditions.
- Develop an asset management plan to ensure regular maintenance and upkeep of sidewalks.

8. **Identify best practices for ensuring old trees are protected in sidewalk construction projects.** Murphysboro has many old trees that benefit sidewalk users by providing shade in warmer months. They also contribute to sidewalk

condition issues, when roots begin to push sidewalk segments up. As the city works to replace sidewalks along blocks with old trees, it should work with construction crews to ensure protection of its tree population. Bloomington's Sidewalk Plan includes an assessment of best practices that can be implemented. The plan is linked in the resources section.

9. **Continue to advance and promote the implementation of existing ordinances and the comprehensive plan**

- Develop an ADA transition plan
- Create a Bicycle and Pedestrian Master Plan.
- Draft a Complete Streets Policy.
- Create high quality street and sidewalk standards for new development.
- Provide and promote the sidewalk program cost share program.
- Work with developers to install sidewalks in all new subdivisions and developments.

10. **Develop a regular inspection schedule to track the condition of sidewalks.** This inventory should be updated regularly to ensure sidewalk condition is tracked and needed improvements are prioritized over time.

SUMMARY OF AVAILABLE FEDERAL FUNDING PROGRAMS

Program Name	Program Purpose	Program Administrator	Eligible Projects	Key Project Requirements	Application Process	Local Match Required	Who Can Apply
Transportation Enhancements (ITEP)	To foster cultural, historic, aesthetic and environmental aspects of our transportation infrastructure	IDOT	Bike/ped facilities, safety education programs and encouragement incentives.	Must relate to surface transportation.	Generally every other year. Next anticipated call for projects October 2020.	Typically 20%	Local governments
Safe Routes to School (SRTS)	To enable and encourage children to walk and bike to school through education, encouragement, enforcement, engineering, and evaluation.	IDOT	Bike/ped facilities, safety education programs and encouragement incentives.	Can only be spent within 1 ½ miles of a school.	Irregular schedule. Next anticipated call for projects in 2020.	20%	Any governmental entity
Highway Safety Improvement Program (HSIP)	To fund highway infrastructure safety projects aimed at reducing fatalities and serious injuries.	IDOT Division of Traffic Safety	Bike lanes, paved shoulders, Trail/Highway intersection improvements, crosswalks, signal improvement, and curb cuts as well as safety education and awareness programs.	Must address goals written in State Highway Safety Plan.	Generally there is an annual update to the Plan at call of IDOT Division of Traffic Safety.	10%	Any governmental entity or non-profit

GRANTS FROM FOUNDATIONS

Community Change Grant Award (America Walks): Awards communities \$1,500 stipends for projects related to creating healthy, active, and engaged places to live, work, and play.

Rails to Trails, Doppelt Family Development Grant (RTC): RTC launched a new grant program in 2015 to support organizations and local governments that are implementing projects to build and improve multi-use trails. Under the Doppelt Family Trail Development Fund, RTC will award approximately \$85,000 per year, distributed among several qualifying projects, through a competitive process. No local match required.

PRIORITIZING IMPROVEMENTS

Because it is not feasible to replace all sidewalk gaps and sidewalks rated poor at once in Murphysboro, the project team developed a decision-matrix for determining the overall priority for replacing sidewalks (see page 23). Those in poor condition, with gaps, or with no sidewalk are prioritized.

This decision matrix should be reassessed over time to ensure that it is consistent with the community's goals and priorities. Fifth, Sixth, Seventh, and Eighth Priority projects are listed in a full spreadsheet provided to the city.

Projects were ranked as follows:

Prioritization Considerations

PRIORITY 1

Projects that provide access to key destinations like schools, parks, social service centers, bus stops, and the town center on arterials and collectors.

PRIORITY 3

Projects that provide access to underserved populations, such as people living below the poverty line, seniors, and youth on arterials and collectors.

PRIORITY 5

Projects on arterials or collectors in poor condition or with gaps not addressed in priorities 1 and 3.

PRIORITY 2

Projects that provide access to key destinations like schools, parks, social service centers, bus stops, and the town center on local roads.

PRIORITY 4

Projects that provide access to underserved populations, such as people living below the poverty line, seniors, and youth on local roads.

PRIORITY 6

Projects on local roads in poor condition or with gaps not addressed in priorities 1 and 3.

ONGOING PRIORITIES

Sidewalks rated fair or good that may benefit from trimming or sweeping.

Sidewalks rated excellent or good that should be inspected for deterioration.



Sidewalk in poor condition on a local street.



Sidewalk in fair condition on a local street.



Sidewalk in fair condition on an arterial.

First and Second Priority Projects										
Road Name	From	To	Side of Street	Rating	Functional Classification	Underserved Area	Local Destination	Town Center	Priority	Length in Feet
Commercial Ave	Park Dist	S 24th St	N	None/Gap	Collector	No	No	No	1	80.254373
Commercial Ave	S 24th St	S 23rd St	N	Poor	Collector	No	Yes	No	1	220.288886
Commercial Ave	S 24th St	S 23rd St	N	None/Gap	Collector	No	Yes	No	1	58.904793
Commercial Ave	S 24th St	S 23rd St	N	None/Gap	Collector	No	Yes	No	1	104.975926
Fair Dr	Candy Ln	Crescent Dr	N	None/Gap	Collector	Yes	Yes	No	1	327.738135
Fair Dr	N 14th St	Fair Dr	S	None/Gap	Collector	Yes	Yes	No	1	360.154094
Fair Dr	N 14th St	Fair Dr	N	None/Gap	Collector	Yes	Yes	No	1	349.780609
Fair Dr	N 16th St	Crescent Dr	N	None/Gap	Collector	Yes	Yes	No	1	567.990244
Hanson St	N 11th St	N 10th St	S	Poor	Collector	No	Yes	Yes	1	198.069284
Hanson St	N 13th St	N 12th St	S	None/Gap	Collector	No	Yes	Yes	1	148.271323
Hanson St	N 13th St	N 12th St	N	None/Gap	Collector	No	Yes	Yes	1	148.907155
Hanson St	N 14th St	N 13th St	N	Poor	Collector	No	Yes	Yes	1	197.560608
Hanson St	N 7th St	N 8th St	S	None/Gap	Collector	No	Yes	No	1	329.549907
N 11th St	Hanson St	Locust St	W	Poor	Collector	No	Yes	Yes	1	270.454324
N 11th St	N 12th St	Hanson St	W	Poor	Collector	No	Yes	Yes	1	678.32586
N 11th St	N 12th St	Poplar St	W	None/Gap	Collector	No	Yes	Yes	1	148.250198
N 14th St	Carruthers Dr	Fair Dr	W	None/Gap	Arterial	Yes	Yes	No	1	410.426325
N 14th St	Keough Dr	Illinois Ave	E	None/Gap	Arterial	Yes	Yes	No	1	710.054057
N 14th St	Suburban Dr	Fair Dr	E	None/Gap	Arterial	Yes	Yes	No	1	860.483273
N 14th St	Village Limit	Carruthers Dr	W	None/Gap	Arterial	Yes	Yes	No	1	527.99276
N 14th St	Village Limit	Suburban Dr	E	None/Gap	Arterial	Yes	Yes	No	1	78.8954
N 16th St	Elm St	Pine St	E	Poor	Collector	No	Yes	Yes	1	129.446175
N 16th St	Harry Ray Dr	Fair Dr	E	None/Gap	Collector	Yes	Yes	No	1	464.294524
N 16th St	Harry Ray Dr	Roberta Dr	W	None/Gap	Collector	Yes	No	No	1	475.256761
N 17th St	Gartside St	Pine St	W	None/Gap	Collector	Yes	Yes	Yes	1	2207.267775
N 17th St	Poplar St	Logan St	E	Poor	Collector	No	Yes	Yes	1	602.676861
N 20th St	Wall St	Logan St	W	Poor	Arterial	Yes	Yes	No	1	55.458534
N 20th St	Wall St	Logan St	W	Poor	Arterial	Yes	Yes	No	1	50.583256
N 6th St	North St	Walnut St	E	None/Gap	Collector	No	Yes	Yes	1	209.281849

First and Second Priority Projects

Road Name	From	To	Side of Street	Rating	Functional Classification	Underserved Area	Local Destination	Town Center	Priority	Length in Feet
N 6th St	North St	Walnut St	W	None/Gap	Collector	No	Yes	Yes	1	398.255194
N 7th St	City St	Hanson St	W	None/Gap	Collector	No	Yes	No	1	833.341831
N 7th St	North St	Walnut St	W	Poor	Collector	No	Yes	Yes	1	130.280202
N 7th St	North St	Walnut St	E		Collector	No	Yes	Yes	1	174.944588
N 7th St	North St	Walnut St	W	None/Gap	Collector	No	Yes	Yes	1	108.587905
N 7th St	North St	Walnut St	W	Poor	Collector	No	Yes	Yes	1	61.716183
N 9th St	Hanson St	North St	W	Poor	Collector	No	Yes	Yes	1	189.369634
N 9th St	Hickory St	Maple St	E	Poor	Collector	No	Yes	No	1	106.193059
N 9th St	Locust St	Walnut St	W	Poor	Collector	No	Yes	Yes	1	109.993507
N 9th St	North St	Locust St	W	Poor	Collector	No	Yes	Yes	1	187.665847
Poplar St	N 13th St	N 11th St	S	None/Gap	Collector	No	Yes	Yes	1	106.689949
Poplar St	N 14th St	N 13th St	S	None/Gap	Collector	No	Yes	Yes	1	378.732623
S 5th St	Walnut St	6th St	W	None/Gap	Arterial	No	Yes	Yes	1	437.14456
Walnut St	N 5th St	N 4th St	N	None/Gap	Arterial	No	Yes	Yes	1	501.329725
Blackwood Dr	N 14th St	Murphysboro High School	S	None/Gap	Local Road	Yes	Yes	No	2	703.638449
Blackwood Dr	N 14th St	Murphysboro High School	N	None/Gap	Local Road	Yes	No	No	2	701.057911
Blackwood Dr	N 14th St	Murphysboro High School	S	None/Gap	Local Road	Yes	Yes	No	2	1619.834085
Blackwood Dr	N 14th St	Murphysboro High School	N	None/Gap	Local Road	Yes	No	No	2	1629.388236
Candy Ln	Fair Dr	Carruthers Dr	E	None/Gap	Local Road	Yes	Yes	No	2	315.570092
Carruthers Dr	Candy Ln	N 14th St	S	None/Gap	Local Road	Yes	Yes	No	2	324.027083
Carruthers Dr	Candy Ln	N 14th St	N	None/Gap	Local Road	Yes	Yes	No	2	373.760091
Chestnut St	S 6th St	S 7th St	S	Poor	Local Road	No	Yes	Yes	2	145.424439
Chestnut St	S 6th St	S 7th St	N	Poor	Local Road	No	Yes	Yes	2	129.243062
Chestnut St	S 7th St	S 8th St	N	Poor	Local Road	No	Yes	Yes	2	200.307223
Chestnut St	S 8th St	S 7th St	S	Poor	Local Road	No	Yes	Yes	2	86.928943
Chestnut St	S 8th St	S 7th St	S	Poor	Local Road	No	Yes	Yes	2	102.100793

First and Second Priority Projects

Road Name	From	To	Side of Street	Rating	Functional Classification	Underserved Area	Local Destination	Town Center	Priority	Length in Feet
Chestnut St	S 8th St	S 9th St	N	None/Gap	Local Road	No	Yes	Yes	2	99.381244
Chestnut St	S 9th St	S 8th St	S	Poor	Local Road	No	Yes	Yes	2	196.72401
Edith St	S 22nd St	S 21st St	S	Poor	Local Road	Yes	Yes	No	2	318.277745
Elm St	N 17th St	N 16th St	S	Poor	Local Road	No	Yes	Yes	2	196.335369
Elm St	N 17th St	N 16th St	N	Poor	Local Road	No	Yes	Yes	2	122.889925
Hall St	N 14th St	N 13th St	S	None/Gap	Local Road	No	Yes	Yes	2	327.789976
Hall St	N 14th St	N 13th St	N	Poor	Local Road	No	Yes	Yes	2	388.32839
Hall St	N 14th St	N 13th St	S	Poor	Local Road	No	Yes	Yes	2	61.660546
Hall St	N 14th St	N 15th St	S	None/Gap	Local Road	No	Yes	Yes	2	339.162797
Hall St	N 14th St	N 15th St	N	None/Gap	Local Road	No	Yes	Yes	2	339.438728
Harry Ray Dr	Blackwood Dr	City Limit	S	None/Gap	Local Road	Yes	No	No	2	186.504207
Harry Ray Dr	Blackwood Dr	City Limit	N	None/Gap	Local Road	Yes	Yes	No	2	241.380063
Harry Ray Dr	Blackwood Dr	City Limit	W	None/Gap	Local Road	Yes	No	No	2	492.29185
Harry Ray Dr	Blackwood Dr	City Limit	E	None/Gap	Local Road	Yes	Yes	No	2	481.184977
Locust St	N 9th St	N 8th St	S	None/Gap	Local Road	No	Yes	Yes	2	197.342479
Locust St	N 9th St	N 8th St	N	Poor	Local Road	No	Yes	Yes	2	196.551434
Logan St	N 21st St	N 20th St	N	Poor	Local Road	Yes	Yes	No	2	513.540191
Logan St	N 21st St	N 20th St	S	Poor	Local Road	Yes	Yes	No	2	58.182908
Logan St	N 21st St	N 20th St	S	Poor	Local Road	Yes	Yes	No	2	50.661735
Logan St	N 21st St	N 20th St	S	Poor	Local Road	Yes	Yes	No	2	85.045186
Manning St	N 14th St	N 13th St	S	Poor	Local Road	No	Yes	Yes	2	163.200677
Manning St	N 14th St	N 13th St	N	Poor	Local Road	No	Yes	Yes	2	188.746353
Mulberry St	S 10th St	S 13th St	S	None/Gap	Local Road	No	Yes	Yes	2	354.677678
Mulberry St	S 10th St	S 13th St	S	None/Gap	Local Road	No	Yes	Yes	2	40.010648
Mulberry St	S 12th St	S 11th St	N	Poor	Local Road	No	Yes	Yes	2	91.907962
Mulberry St	S 7th St	S 6th St	N	Poor	Local Road	No	Yes	Yes	2	159.749803

First and Second Priority Projects

Road Name	From	To	Side of Street	Rating	Functional Classification	Underserved Area	Local Destination	Town Center	Priority	Length in Feet
Mulberry St	S 8th St	S 6th St	S	None/Gap	Local Road	No	Yes	Yes	2	305.745052
Mulberry St	S 9th St	S 8th St	S	Poor	Local Road	No	Yes	Yes	2	198.305431
Mulberry St	S 9th St	S 8th St	N	Poor	Local Road	No	Yes	Yes	2	109.483078
Mulberry St	S 9th St	S 8th St	N		Local Road	No	Yes	Yes	2	89.031014
N 10th St	Hanson St	Locust St	W	Poor	Local Road	No	Yes	Yes	2	109.968496
N 12th St	Hanson St	Locust St	W	None/Gap	Local Road	No	Yes	Yes	2	587.437436
N 12th St	Locust St	Walnut St	E	Poor	Local Road	No	Yes	Yes	2	79.321081
N 12th St	N 11th St	Hanson St	E		Local Road	No	Yes	Yes	2	258.263467
N 12th St	N 11th St	Hanson St	W	None/Gap	Local Road	No	Yes	Yes	2	756.749328
N 12th St	N 11th St	Hanson St	E		Local Road	No	Yes	Yes	2	129.301593
N 13th St	Hall St	Hanson St	W	Poor	Local Road	No	Yes	Yes	2	153.307053
N 13th St	Hanson St	Locust St	E	None/Gap	Local Road	No	Yes	Yes	2	136.835682
N 13th St	Poplar St	Hanson St	E	None/Gap	Local Road	No	Yes	Yes	2	857.489776
N 13th St	Poplar St	Turner St	W	None/Gap	Local Road	No	Yes	Yes	2	131.006837
N 13th St	Turner St	Hall St	W	None/Gap	Local Road	No	Yes	Yes	2	282.422199
N 15th St	Hall St	Manning St	E	Poor	Local Road	No	Yes	Yes	2	44.117521
N 18th St	Pine St	Walnut St	W	Poor	Local Road	Yes	Yes	Yes	2	158.999999
N 21st St	Wall St	Logan St	E	Poor	Local Road	Yes	Yes	No	2	328.428978
N 4th St	Murphy St	North St	W	Poor	Local Road	No	Yes	No	2	370.029554
N 5th St	North St	Walnut St	W	None/Gap	Local Road	No	Yes	Yes	2	76.465989
N 8th St	City St	Hanson St	W	None/Gap	Local Road	No	Yes	No	2	450.717672
N 8th St	Hanson St	North St	E	Poor	Local Road	No	Yes	Yes	2	402.656858
N 8th St	Hanson St	North St	W	None/Gap	Local Road	No	Yes	Yes	2	402.818947
N 8th St	North St	Locust St	W	None/Gap	Local Road	No	Yes	Yes	2	140.550538
North St	N 8th St	N 7th St	S	Poor	Local Road	No	Yes	Yes	2	193.492948
North St	N 8th St	N 7th St	N	Poor	Local Road	No	Yes	Yes	2	319.200191
North St	N 9th St	N 8th St	N	Poor	Local Road	No	Yes	Yes	2	195.475839
Pine St	N 16th St	N 15th St	S	Poor	Local Road	No	Yes	Yes	2	189.40087
Pine St	N 17th St	N 16th St	S	None/Gap	Local Road	No	Yes	Yes	2	140.956346

First and Second Priority Projects

Road Name	From	To	Side of Street	Rating	Functional Classification	Underserved Area	Local Destination	Town Center	Priority	Length in Feet
Roblee Ave	S 24th St	S 23rd St	S	None/Gap	Local Road	No	Yes	No	2	522.698446
Roblee Ave	S 24th St	S 23rd St	N	None/Gap	Local Road	No	Yes	No	2	205.360107
Roblee Ave	S 24th St	S 23rd St	N	None/Gap	Local Road	No	No	No	2	65.356997
S 10th St	Chestnut St	Mulberry St	W	Poor	Local Road	No	Yes	Yes	2	145.673099
S 15th St	Walnut St	Spruce St	W		Local Road	No	Yes	Yes	2	148.698741
S 6th St	Chestnut St	Mulberry St	E	None/Gap	Local Road	No	Yes	Yes	2	164.941326
S 6th St	Chestnut St	Mulberry St	W	Poor	Local Road	No	Yes	Yes	2	70.802996
S 6th St	Chestnut St	Mulberry St	W	Poor	Local Road	No	Yes	Yes	2	71.162721
S 6th St	Chestnut St	Mulberry St	E	Poor	Local Road	No	Yes	Yes	2	230.609242
S 6th St	Walnut St	Chestnut St	W	Poor	Local Road	No	Yes	Yes	2	89.45362
S 6th St	Walnut St	Chestnut St	E	Poor	Local Road	No	Yes	Yes	2	73.40499
S 6th St	Walnut St	Chestnut St	W	None/Gap	Local Road	No	Yes	Yes	2	88.138392
S 6th St	Walnut St	Plum St	E	None/Gap	Local Road	No	Yes	Yes	2	175.195057
S 8th St	Walnut St	Chestnut St	E	Poor	Local Road	No	Yes	Yes	2	94.037644
S 9th St	Chestnut St	Mulberry St	W	Poor	Local Road	No	Yes	Yes	2	151.699271
S 9th St	Chestnut St	Mulberry St	E	Poor	Local Road	No	Yes	Yes	2	152.591201
S 9th St	Walnut St	Chestnut St	E	None/Gap	Local Road	No	Yes	Yes	2	115.168545
South St	S 14th St	S 13th St	S	Poor	Local Road	No	Yes	Yes	2	192.030616
Spruce St	S 17th St	S 16th St	S	Poor	Local Road	No	Yes	Yes	2	52.762552
Spruce St	S 18th St	S 17th St	S	Poor	Local Road	Yes	Yes	Yes	2	325.943565
Spruce St	S 19th St	S 18th St	S	Poor	Local Road	Yes	Yes	Yes	2	89.792346
Suburban Dr	N 14th St	Street End	S	None/Gap	Local Road	Yes	Yes	No	2	976.092847
Suburban Dr	N 14th St	Street End	N	None/Gap	Local Road	Yes	Yes	No	2	973.416988
Turner St	N 14th St	N 13th St	S	None/Gap	Local Road	No	Yes	Yes	2	382.958397
Wall St	N 21st St	N 20th St	S	Poor	Local Road	Yes	Yes	No	2	149.847216
Wall St	N 21st St	N 20th St	S	Poor	Local Road	Yes	Yes	No	2	240.985989
Wall St	N 21st St	N 20th St	S	Poor	Local Road	Yes	Yes	No	2	127.341807

Third and Fourth Priority Projects

Road Name	From	To	Side of Street	Rating	Functional Classification	Disadvantaged Area	Local Destination	Town Center	Priority	Length in Feet
Division St	S 19th St	S 18th St	N	Poor	Collector	15	No	No	3	105.909687
Division St	S 19th St	S 18th St	S	Poor	Collector	15	No	No	3	24.632871
Division St	S 19th St	S 18th St	S	Poor	Collector	15	No	No	3	21.40624
Division St	S 19th St	S 18th St	S	Poor	Collector	15	No	No	3	107.534312
Division St	S 19th St	S 18th St	N	Poor	Collector	15	No	No	3	57.64923
Division St	S 20th St	S 19th St	S	Poor	Collector	15	No	No	3	177.940524
Division St	S 20th St	S 19th St	N	Poor	Collector	15	No	No	3	454.604806
Division St	S 20th St	S 19th St	S	Poor	Collector	15	No	No	3	49.415034
Division St	S 21st St	S 20th St	S	Poor	Collector	15	No	No	3	321.530891
Division St	S 21st St	S 20th St	N	Poor	Collector	15	No	No	3	343.534093
Division St	S 22nd St	S 21st St	N	Poor	Collector	15	No	No	3	202.982574
Division St	S 22nd St	S 21st St	S	Poor	Collector	15	No	No	3	103.660028
Division St	S 22nd St	S 21st St	S	Poor	Collector	15	No	No	3	180.637586
Division St	S 22nd St	S 21st St	N	None/Gap	Collector	15	No	No	3	18.682652
Division St	S 23rd St	S 22nd St	<Null>	None/Gap	Collector	15	No	No	3	27.245429
Division St	S 23rd St	S 22nd St	S	Poor	Collector	15	No	No	3	49.544348
Division St	S 23rd St	S 22nd St	N	Poor	Collector	15	No	No	3	72.251517
Gartside St	N 17th St	N 19th St	S	None/Gap	Arterial	Yes	Yes	No	3	698.757288
Gartside St	N 23rd St	N 22nd St	S	None/Gap	Arterial	Yes	No	No	3	74.883076
Illinois Ave	N 16th St	N 14th St	N	None/Gap	Collector	15	No	No	3	674.831287
N 11th St	Bost Ln	Kristy Ave	E	None/Gap	Collector	15	No	No	3	316.679775
N 11th St	N 14th St	Kristy Ave	E	Poor	Collector	15	No	No	3	65.655594
N 11th St	Somerset St	Kristy Ave	E	Poor	Collector	15	No	No	3	289.808832
N 14th St	Bost Ln	Keough Dr	E	None/Gap	Arterial	Yes	No	No	3	644.179013
N 14th St	Bradford Pl	Roberta Dr	W	None/Gap	Arterial	Yes	No	No	3	495.632197
N 14th St	Fair Dr	Bost Ln	E	None/Gap	Arterial	Yes	No	No	3	631.301204
N 14th St	Fair Dr	Bradford Pl	W	None/Gap	Arterial	Yes	Yes	No	3	277.036282
N 16th St	Crescent Dr	Candy Ln	E	None/Gap	Collector	15	No	No	3	335.843522
N 16th St	Fair Dr	Crescent Dr	E	None/Gap	Collector	15	No	No	3	325.057977

Third and Fourth Priority Projects

Road Name	From	To	Side of Street	Rating	Functional Classification	Disadvantaged Area	Local Destination	Town Center	Priority	Length in Feet
N 16th St	Harry Ray Dr	Roberta Dr	W	None/Gap	Collector	15	No	No	3	1066.199532
N 16th St	Mcbride Ln	Synder Ln	E	None/Gap	Collector	15	No	No	3	468.116701
N 16th St	McBride Ln	Illinois Ave	E	None/Gap	Collector	15	No	No	3	178.167551
N 16th St	Roberta Dr	Candy Ln	E	None/Gap	Collector	15	No	No	3	304.001844
N 16th St	Roberta Dr	Grace St	W	None/Gap	Collector	15	No	No	3	739.769181
N 16th St	Roberta Dr	Roberta Dr	W	None/Gap	Collector	15	No	No	3	904.012579
N 16th St	Synder Ln	Roberta Dr	E	None/Gap	Collector	15	No	No	3	393.383673
N 17th St	Grace St	Gartside St	E	None/Gap	Collector	15	No	No	3	297.592404
N 17th St	Grace St	Gartside St	W	None/Gap	Collector	15	No	No	3	345.777483
N 17th St	Pine St	Walnut St	W	None/Gap	Collector	15	No	Yes	3	307.450835
N 20th St	Elm St	Pine St	W	Poor	Arterial	Yes	No	No	3	315.488304
N 20th St	Herbert St	Clarke St	E	Poor	Arterial	Yes	No	No	3	132.773296
N 20th St	Herbert St	Clarke St	E	Poor	Arterial	Yes	No	No	3	71.166447
N 20th St	Logan St	Elm St	W	Poor	Arterial	Yes	No	No	3	91.267002
N 20th St	Pine St	Walnut St	W	Poor	Collector	15	No	No	3	165.917331
N 20th St	Pine St	Walnut St	W	Poor	Arterial	Yes	No	No	3	146.234207
N 20th St	Pine St	Walnut St	E	Poor	Arterial	Yes	No	No	3	140.016367
N 22nd St	Clarke St	Wall St	E	Poor	Collector	15	No	No	3	61.620153
N 22nd St	Elm St	Pine St	E	Poor	Collector	15	No	No	3	66.201084
N 22nd St	Gartside St	Logan St	W	Poor	Collector	15	No	No	3	233.903673
N 22nd St	Gartside St	Logan St	W	Poor	Collector	15	No	No	3	138.710855
N 22nd St	Gartside St	Logan St	W	Poor	Collector	15	No	No	3	144.718512
N 22nd St	Gartside St	Logan St	W	Poor	Collector	15	No	No	3	156.902587
N 22nd St	Gartside St	Logan St	W	Poor	Collector	15	No	No	3	217.882537
N 22nd St	Hortense St	Herbert St	E	Poor	Collector	15	No	No	3	266.412997
N 22nd St	Logan St	Elm St	W	Poor	Collector	15	No	No	3	150.559495
N 22nd St	Wall St	Logan St	E	Poor	Collector	15	No	No	3	30.395459
N 7th St	Somerset St	City Limit	W	None/Gap	Collector	15	No	No	3	4114.749431
N 7th St	Somerset St	City Limit	W	Poor	Collector	15	No	No	3	59.704377

Third and Fourth Priority Projects

Road Name	From	To	Side of Street	Rating	Functional Classification	Disadvantaged Area	Local Destination	Town Center	Priority	Length in Feet
S 17th St	Edith St	Oak St	E	Poor	Collector	15	No	No	3	288.008907
S 17th St	Oak St	Stecher St	E	Poor	Collector	15	No	No	3	373.873445
S 17th St	Spruce St	Edith St	E	Poor	Collector	15	No	No	3	161.725105
S 17th St	Spruce St	Shomaker Dr	W	None/Gap	Collector	15	Yes	Yes	3	2270.083719
S 17th St	Walnut St	Spruce St	W	None/Gap	Collector	15	No	Yes	3	306.501287
S 20th St	Apple Ln	Shomaker Dr	E	None/Gap	Arterial	Yes	No	No	3	143.635468
S 20th St	Apple Ln	Shomaker Dr	E	Poor	Arterial	Yes	No	No	3	77.361965
S 20th St	Division St	Apple Ln	E	Poor	Arterial	Yes	No	No	3	517.458992
S 20th St	Division St	Apple Ln	E	Poor	Arterial	Yes	No	No	3	94.986009
S 20th St	Division St	Apple Ln	E	Poor	Arterial	Yes	No	No	3	150.388167
S 20th St	Division St	Apple Ln	E	Poor	Arterial	Yes	No	No	3	57.314878
S 20th St	Division St	Apple Ln	E	Poor	Arterial	Yes	No	No	3	268.354089
S 20th St	Division St	Apple Ln	E	Poor	Arterial	Yes	No	No	3	72.928178
S 20th St	Division St	Dewey St	W	Poor	Arterial	Yes	No	No	3	144.824571
S 20th St	Division St	Dewey St	W	None/Gap	Arterial	Yes	No	No	3	25.965091
S 20th St	Mccord St	Alexander St	W	Poor	Arterial	Yes	No	No	3	63.856649
S 20th St	Spruce St	Division St	W	Poor	Arterial	Yes	No	No	3	98.745693
S 20th St	Spruce St	Division St	E	None/Gap	Arterial	Yes	No	No	3	28.638439
S 20th St	Spruce St	Division St	E	Poor	Arterial	Yes	No	No	3	74.051806
S 20th St	Spruce St	Division St	E	Poor	Arterial	Yes	No	No	3	96.007177
S 22nd St	Alexander Ave	Mccord St	E	None/Gap	Collector	15	No	No	3	307.724129
S 22nd St	Division St	Spruce St	E	None/Gap	Collector	15	No	No	3	159.947576
S 22nd St	Edith St	Division St	E	None/Gap	Collector	15	No	No	3	17.325024
S 22nd St	Mccord St	Alexander Ave	W	None/Gap	Collector	15	No	No	3	308.278595
S 22nd St	Mccord St	Clay St	W	None/Gap	Collector	15	No	No	3	299.573481
S 22nd St	Mccord St	Clay St	E	None/Gap	Collector	15	No	No	3	300.343683
S 22nd St	Walnut St	Division St	W	Poor	Collector	15	No	No	3	57.519803
S 22nd St	Walnut St	Division St	W	None/Gap	Collector	15	No	No	3	255.140106

Third and Fourth Priority Projects

Road Name	From	To	Side of Street	Rating	Functional Classification	Disadvantaged Area	Local Destination	Town Center	Priority	Length in Feet
S 22nd St	Walnut St	Division St	W	Poor	Collector	15	No	No	3	54.768329
S 22nd St	Walnut St	Division St	W	Poor	Collector	15	No	No	3	40.012561
S 23rd St	Clay St	Mccord St	E	Poor	Collector	15	No	No	3	136.834287
S 23rd St	Clay St	Mccord St	E	None/Gap	Collector	15	No	No	3	20.946138
S 23rd St	Dewey St	Clay St	E	Poor	Collector	15	No	No	3	153.628903
S 23rd St	Dewey St	Clay St	E	Poor	Collector	15	No	No	3	140.380189
S 23rd St	Dewey St	Clay St	E	None/Gap	Collector	15	No	No	3	22.10831
Shomaker Dr	S 17th St	S 18th St	N	None/Gap	Arterial	Yes	No	No	3	816.805627
Walnut St	Herring Dr	S 22nd St	S	None/Gap	Arterial	Yes	No	No	3	1576.885125
Walnut St	Louis Wides Dr	N 22nd St	N	None/Gap	Arterial	Yes	No	No	3	1458.005277
Walnut St	Louis Wides Dr	N 22nd St	N	Poor	Arterial	Yes	No	No	3	54.024174
Walnut St	N 22nd St	N 21st St	S	None/Gap	Arterial	Yes	No	No	3	56.964931
Alexander Ave	S 19th St	Apple Ln	W	None/Gap	Local Road	15	No	No	4	434.066627
Alexander Ave	S 21st St	S 20th St	N	None/Gap	Local Road	15	No	No	4	523.15465
Alexander Ave	S 22nd St	S 21st St	N	None/Gap	Local Road	15	No	No	4	522.71891
Alexander Ave	S 23rd St	S 22nd St	N	Poor	Local Road	15	No	No	4	292.524344
Alexander Ave	S 23rd St	S 22nd St	N	None/Gap	Local Road	15	No	No	4	186.437212
Alexander Ave	S 23rd St	S 22nd St	N	None/Gap	Local Road	15	No	No	4	30.358971
Apple Ln	S 20th St	S 18th St	S	None/Gap	Local Road	15	No	No	4	743.089499
Apple Ln	S 20th St	S 19th St	N	None/Gap	Local Road	15	No	No	4	215.501546
Bishop Dr	N 20th St	N 19th St	N	None/Gap	Local Road	15	No	No	4	368.836178
Bost Ln	N 11th St	N 14th St	S	None/Gap	Local Road	15	No	No	4	328.067567
Bost Ln	N 11th St	N 14th St	N	None/Gap	Local Road	15	No	No	4	349.123717
Bradford Pl	N 14th St	Street End	E	None/Gap	Local Road	15	No	No	4	325.967007
Bradford Pl	N 14th St	Street End	W	None/Gap	Local Road	15	No	No	4	353.648038
Bradford Pl	N 14th St	Street End	N	None/Gap	Local Road	15	No	No	4	164.625177
Bradford Pl	N 14th St	Street End	S	None/Gap	Local Road	15	No	No	4	128.249258
Brown Pl	S 19th St	Street End	S	Poor	Local Road	15	No	No	4	42.804894

Third and Fourth Priority Projects

Road Name	From	To	Side of Street	Rating	Functional Classification	Disadvantaged Area	Local Destination	Town Center	Priority	Length in Feet
Brown Pl	S 19th St	Street End	N	Poor	Local Road	15	No	No	4	42.74452
Candy Ln	Candy Ln	Fair Dr	E	None/Gap	Local Road	15	Yes	No	4	520.402616
Candy Ln	Candy Ln	Fair Dr	N	None/Gap	Local Road	15	Yes	No	4	1061.83011
Candy Ln	Candy Ln	Street End	W	None/Gap	Local Road	15	No	No	4	142.890345
Candy Ln	Candy Ln	Street End	E	None/Gap	Local Road	15	No	No	4	143.075511
Candy Ln	N 16th St	Candy Ln	S	None/Gap	Local Road	15	No	No	4	537.925063
Clarke St	S 20th St	S 19th St	N	Poor	Local Road	15	No	No	4	91.823482
Clarke St	S 20th St	S 19th St	S	Poor	Local Road	15	No	No	4	113.095243
Clarke St	S 21st St	S 20th St	S	Poor	Local Road	15	No	No	4	107.465667
Clarke St	S 21st St	S 20th St	N	Poor	Local Road	15	No	No	4	59.807494
Clarke St	S 21st St	S 20th St	N	Poor	Local Road	15	No	No	4	48.674648
Clarke St	S 21st St	S 20th St	N	Poor	Local Road	15	No	No	4	58.494089
Clarke St	S 21st St	S 20th St	N	Poor	Local Road	15	No	No	4	115.683981
Clarke St	S 21st St	S 20th St	S	Poor	Local Road	15	No	No	4	154.876804
Clarke St	S 21st St	S 20th St	S	Poor	Local Road	15	No	No	4	59.482008
Clarke St	S 21st St	S 20th St	S	Poor	Local Road	15	No	No	4	42.986334
Clarke St	S 22nd St	S 21st St	N	Poor	Local Road	15	No	No	4	60.512591
Clarke St	S 22nd St	S 21st St	N	Poor	Local Road	15	No	No	4	143.870607
Clarke St	S 22nd St	S 21st St	S	Poor	Local Road	15	No	No	4	63.168136
Clarke St	S 22nd St	S 21st St	S	Poor	Local Road	15	No	No	4	159.225143
Clay St	S 21st St	S 20th St	S	None/Gap	Local Road	15	No	No	4	519.310853
Clay St	S 21st St	S 20th St	N	None/Gap	Local Road	15	No	No	4	488.65402
Clay St	S 22nd St	S 21st St	S	Poor	Local Road	15	No	No	4	399.405666
Clay St	S 22nd St	S 21st St	N	Poor	Local Road	15	No	No	4	74.551808
Clay St	S 22nd St	S 21st St	N	Poor	Local Road	15	No	No	4	54.69193
Clay St	S 23rd St	S 22nd St	S	Poor	Local Road	15	No	No	4	243.550957
Clay St	S 23rd St	S 22nd St	S	Poor	Local Road	15	No	No	4	29.899316
Clay St	S 23rd St	S 22nd St	N	Poor	Local Road	15	No	No	4	199.164104
Clay St	S 23rd St	S 22nd St	N	Poor	Local Road	15	No	No	4	48.50004

Third and Fourth Priority Projects

Road Name	From	To	Side of Street	Rating	Functional Classification	Disadvantaged Area	Local Destination	Town Center	Priority	Length in Feet
Crescent Dr	N 16th St	Fair Dr	N	None/Gap	Local Road	15	No	No	4	412.059954
Crescent Dr	N 16th St	Fair Dr	S	None/Gap	Local Road	15	Yes	No	4	709.982799
Dewey St	S 20th St	S 21st St	N	Poor	Local Road	15	No	No	4	154.059814
Dewey St	S 20th St	S 21st St	N	Poor	Local Road	15	No	No	4	66.920363
Dewey St	S 23rd St	S 21st St	N	Poor	Local Road	15	No	No	4	317.315629
Dewey St	S 23rd St	S 21st St	S	None/Gap	Local Road	15	No	No	4	10.025855
Dewey St	S 23rd St	S 21st St	N	None/Gap	Local Road	15	No	No	4	11.840266
Edith St	S 17th St	S 16th St	S	Poor	Local Road	15	No	No	4	119.541826
Edith St	S 19th St	S 18th St	S	Poor	Local Road	15	No	No	4	189.64731
Edith St	S 19th St	S 18th St	N	Poor	Local Road	15	No	No	4	43.315854
Edith St	S 19th St	S 18th St	N	Poor	Local Road	15	No	No	4	62.211579
Edith St	S 19th St	S 18th St	N	Poor	Local Road	15	No	No	4	83.03638
Edith St	S 19th St	S 18th St	N	Poor	Local Road	15	No	No	4	62.189595
Edith St	S 19th St	Street End	N	Poor	Local Road	15	No	No	4	116.59314
Edith St	S 19th St	Street End	N	Poor	Local Road	15	No	No	4	67.993663
Elm St	N 19th St	N 18th St	N	Poor	Local Road	15	No	No	4	55.143618
Elm St	N 20th St	N 19th St	N	Poor	Local Road	15	No	No	4	43.353601
Elm St	N 21st St	N 20th St	S	Poor	Local Road	15	No	No	4	167.688544
Elm St	N 21st St	N 20th St	N	Poor	Local Road	15	No	No	4	155.177325
Elm St	N 21st St	N 20th St	S	Poor	Local Road	15	No	No	4	59.880653
Elm St	N 22nd St	N 21st St	N	Poor	Local Road	15	No	No	4	349.207905
Elm St	N 22nd St	N 21st St	N	Poor	Local Road	15	No	No	4	110.291717
Grace St	N 17th St	N 16th St	N	None/Gap	Local Road	15	No	No	4	284.172999
Grace St	N 17th St	N 16th St	S	None/Gap	Local Road	15	No	No	4	294.661857
Hardy St	S 19th St	Street End	S	Poor	Local Road	15	No	No	4	306.726074
Hardy St	S 19th St	Street End	N	Poor	Local Road	15	No	No	4	162.287863
Hardy St	S 19th St	Street End	N	None/Gap	Local Road	15	No	No	4	421.433334
Hardy St	S 19th St	Street End	N	Poor	Local Road	15	No	No	4	66.326817
Hardy St	S 19th St	Street End	S	Poor	Local Road	15	No	No	4	52.980089

Third and Fourth Priority Projects

Road Name	From	To	Side of Street	Rating	Functional Classification	Disadvantaged Area	Local Destination	Town Center	Priority	Length in Feet
Hardy St	S 19th St	Street End	S	Poor	Local Road	15	No	No	4	113.434267
Herbert St	N 19th St	N 20th St	N	Poor	Local Road	15	No	No	4	285.00256
Herbert St	N 19th St	N 20th St	S	Poor	Local Road	15	No	No	4	208.289322
Herbert St	N 19th St	N 20th St	S	Poor	Local Road	15	No	No	4	45.772956
Herbert St	N 21st St	N 20th St	S	Poor	Local Road	15	No	No	4	516.464177
Herbert St	N 21st St	N 20th St	N	Poor	Local Road	15	No	No	4	257.601955
Herbert St	N 21st St	N 20th St	N	Poor	Local Road	15	No	No	4	50.647849
Herbert St	N 21st St	N 20th St	N	Poor	Local Road	15	No	No	4	55.094529
Herbert St	N 22nd St	N 21st St	S	Poor	Local Road	15	No	No	4	196.71905
Herbert St	N 22nd St	N 21st St	N	Poor	Local Road	15	No	No	4	217.058511
Herbert St	N 22nd St	N 21st St	S	Poor	Local Road	15	No	No	4	60.610884
Herbert St	N 22nd St	N 21st St	S	Poor	Local Road	15	No	No	4	46.895175
Herbert St	N 22nd St	N 21st St	N	Poor	Local Road	15	No	No	4	115.211578
Herbert St	N 22nd St	N 21st St	N	Poor	Local Road	15	No	No	4	65.24732
Hortense St	N 21st St	N 20th St	S	Poor	Local Road	15	No	No	4	153.624119
Hortense St	N 21st St	N 20th St	S	Poor	Local Road	15	No	No	4	56.024762
Hortense St	N 21st St	N 20th St	S	Poor	Local Road	15	No	No	4	54.737357
Hortense St	N 21st St	N 20th St	S	Poor	Local Road	15	No	No	4	102.066234
Hortense St	N 22nd St	N 21st St	S	Poor	Local Road	15	No	No	4	241.65543
Joeb Ln	Mcbride Ln	Street End	W	None/Gap	Local Road	15	No	No	4	373.046537
Joeb Ln	Mcbride Ln	Street End	E	None/Gap	Local Road	15	No	No	4	372.541227
Kennedy St	S 19th St	Street End	S	Poor	Local Road	15	No	No	4	95.594829
Kennedy St	S 19th St	Street End	N	Poor	Local Road	15	No	No	4	160.991296
Kennedy St	S 19th St	Street End	N	Poor	Local Road	15	No	No	4	36.352335
Kennedy St	S 19th St	Street End	S	Poor	Local Road	15	No	No	4	156.310498
Kennedy St	S 19th St	Street End	N	Poor	Local Road	15	No	No	4	102.789888
Kennedy St	S 19th St	Street End	N	Poor	Local Road	15	No	No	4	50.537292
Kennedy St	S 19th St	Street End	N	Poor	Local Road	15	No	No	4	39.337623
Keough Dr	N 14th St	Illinois Ave	S	None/Gap	Local Road	15	Yes	No	4	184.621188

Third and Fourth Priority Projects

Road Name	From	To	Side of Street	Rating	Functional Classification	Disadvantaged Area	Local Destination	Town Center	Priority	Length in Feet
Keough Dr	N 14th St	Illinois Ave	N	None/Gap	Local Road	15	No	No	4	273.639306
Kristy Ave	N 11th St	Street End	S	None/Gap	Local Road	15	No	No	4	131.977706
Kristy Ave	N 11th St	Street End	N	None/Gap	Local Road	15	No	No	4	133.677757
Logan St	N 19th St	N 18th St	N	None/Gap	Local Road	15	No	No	4	394.006059
Logan St	N 20th St	N 19th St	N	Poor	Local Road	15	No	No	4	88.106872
Logan St	N 20th St	N 19th St	S	Poor	Local Road	15	No	No	4	43.534239
Logan St	N 20th St	N 19th St	S	Poor	Local Road	15	No	No	4	43.378398
Logan St	N 22nd St	N 21st St	N	Poor	Local Road	15	No	No	4	98.025539
Logan St	N 22nd St	N 21st St	N	Poor	Local Road	15	No	No	4	43.33505
Logan St	N 22nd St	N 21st St	S	Poor	Local Road	15	No	No	4	105.716058
Logan St	N 22nd St	N 21st St	S	Poor	Local Road	15	No	No	4	151.679893
Logan St	N 22nd St	N 21st St	S	Poor	Local Road	15	No	No	4	66.781237
Logan St	N 22nd St	N 21st St	N	Poor	Local Road	15	No	No	4	42.450807
Logan St	N 23rd St	N 22nd St	S	Poor	Local Road	15	No	No	4	85.477106
Logan St	N 23rd St	N 22nd St	N	None/Gap	Local Road	15	No	No	4	333.628724
Logan St	N 23rd St	N 22nd St	S	Poor	Local Road	15	No	No	4	98.13797
Logan St	N 23rd St	N 22nd St	S	Poor	Local Road	15	No	No	4	85.1496
Mcbride Ln	N 16th St	Job Ln	S	None/Gap	Local Road	15	No	No	4	264.441627
Mcbride Ln	N 16th St	Job Ln	N	None/Gap	Local Road	15	No	No	4	208.449541
Mccord St	S 21st St	S 20th St	S	Poor	Local Road	15	No	No	4	405.181129
Mccord St	S 21st St	S 20th St	S	None/Gap	Local Road	15	No	No	4	113.192982
Mccord St	S 21st St	S 20th St	N	None/Gap	Local Road	15	No	No	4	150.324262
Mccord St	S 21st St	S 20th St	N	Poor	Local Road	15	No	No	4	163.413435
Mccord St	S 22nd St	S 21st St	S	None/Gap	Local Road	15	No	No	4	530.847266
Mccord St	S 22nd St	S 21st St	N	None/Gap	Local Road	15	No	No	4	530.631307
Mccord St	S 23rd St	S 22nd St	S	None/Gap	Local Road	15	No	No	4	567.497593
Mccord St	S 23rd St	S 22nd St	N	None/Gap	Local Road	15	No	No	4	567.458549
Murphy St	N 2nd St	Street End	S	None/Gap	Local Road	<Null>	No	No	4	200.658204
Murphy St	N 2nd St	Street End	S	None/Gap	Local Road	<Null>	No	No	4	134.194505

Third and Fourth Priority Projects

Road Name	From	To	Side of Street	Rating	Functional Classification	Disadvantaged Area	Local Destination	Town Center	Priority	Length in Feet
Murphy St	N 2nd St	Street End	N	None/Gap	Local Road	<Null>	No	No	4	202.032721
Murphy St	N 2nd St	Street End	N	None/Gap	Local Road	<Null>	No	No	4	129.688161
N 18th St	Elm St	Pine St	W	Poor	Local Road	15	Yes	No	4	317.398693
N 18th St	Elm St	Pine St	E	None/Gap	Local Road	15	No	No	4	318.06509
N 18th St	Elm St	Pine St	E	None/Gap	Local Road	15	No	No	4	40.007932
N 18th St	Logan St	Elm St	E	None/Gap	Local Road	15	No	No	4	379.565862
N 18th St	Logan St	Elm St	W	Poor	Local Road	15	No	No	4	28.260803
N 18th St	Pine St	Walnut St	E	None/Gap	Local Road	15	No	Yes	4	317.114548
N 19th St	Bishop Dr	Hatties Dr	E	None/Gap	Local Road	15	No	No	4	562.914463
N 19th St	Gartside St	Logan St	E	Poor	Local Road	15	No	No	4	629.809389
N 19th St	Gartside St	Logan St	E	Poor	Local Road	15	No	No	4	63.573458
N 19th St	Gartside St	Logan St	E	Poor	Local Road	15	No	No	4	42.728641
N 21st St	Elm St	Pine St	W	Poor	Local Road	15	No	No	4	314.794686
N 21st St	Herbert St	Clarke St	E	Poor	Local Road	15	No	No	4	130.196024
N 21st St	Hortense St	Herbert St	W	Poor	Local Road	15	No	No	4	75.192513
N 21st St	Hortense St	Herbert St	E	Poor	Local Road	15	No	No	4	89.051817
N 21st St	Logan St	Elm St	E	Poor	Local Road	15	No	No	4	156.943724
N 21st St	Pine St	Walnut St	E	Poor	Local Road	15	No	No	4	165.937643
N 21st St	Pine St	Walnut St	W	Poor	Local Road	15	No	No	4	318.895162
N 21st St	Pine St	Walnut St	E	Poor	Local Road	15	No	No	4	78.290461
N 21st St	Pine St	Walnut St	E	Poor	Local Road	15	No	No	4	73.678542
N 2nd St	Murphy St	Street End	E	None/Gap	Local Road	<Null>	No	No	4	285.575208
N 2nd St	North St	Murphy St	W	None/Gap	Local Road	<Null>	No	No	4	268.857566
N 2nd St	North St	Walnut St	E	None/Gap	Local Road	<Null>	No	No	4	296.078725
N 2nd St	Street End	Murphy St	W	None/Gap	Local Road	<Null>	No	No	4	77.201829
N 2nd St	Street End	Murphy St	E	None/Gap	Local Road	<Null>	No	No	4	81.187988
North St	N 2nd St	N 2nd St	S	None/Gap	Local Road	<Null>	No	No	4	195.155927
North St	N 2nd St	N 2nd St	N	None/Gap	Local Road	<Null>	No	No	4	182.651948
Oak St	S 17th St	S 16th St	S	Poor	Local Road	15	No	No	4	318.785766

Third and Fourth Priority Projects

Road Name	From	To	Side of Street	Rating	Functional Classification	Disadvantaged Area	Local Destination	Town Center	Priority	Length in Feet
Oak St	S 17th St	S 16th St	N	Poor	Local Road	15	No	No	4	318.269565
Pine St	N 19th St	N 18th St	N	Poor	Local Road	15	Yes	No	4	91.78575
Pine St	N 20th St	N 19th St	N	Poor	Local Road	15	No	No	4	55.574805
Pine St	N 20th St	N 19th St	N	Poor	Local Road	15	No	No	4	134.265757
Pine St	N 21st St	N 20th St	S	Poor	Local Road	15	No	No	4	100.509505
Pine St	N 21st St	N 20th St	N	Poor	Local Road	15	No	No	4	269.177134
Pine St	N 21st St	N 20th St	S	Poor	Local Road	15	No	No	4	59.897399
Pine St	N 21st St	N 20th St	S	Poor	Local Road	15	No	No	4	58.013886
Pine St	N 22nd St	N 21st St	S	Poor	Local Road	15	No	No	4	220.677764
Pine St	N 22nd St	N 21st St	<Null>	None/Gap	Local Road	15	No	No	4	7.638395
Pine St	N 22nd St	N 21st St	S	Poor	Local Road	15	No	No	4	161.070658
Pine St	N 22nd St	N 21st St	N	Poor	Local Road	15	No	No	4	42.737734
Pine St	N 22nd St	N 21st St	N	Poor	Local Road	15	No	No	4	34.127522
Pine St	N 22nd St	Street End	S	None/Gap	Local Road	15	No	No	4	414.079936
Pine St	N 22nd St	Street End	N	None/Gap	Local Road	15	No	No	4	414.173437
Roberta Dr	N 14th St	Sandra Ct	S	None/Gap	Local Road	15	No	No	4	725.407023
Roberta Dr	N 16th St	N 14th St	N	None/Gap	Local Road	15	No	No	4	1041.172678
Roberta Dr	N 16th St	N 16th St	N	None/Gap	Local Road	15	No	No	4	816.074341
Roberta Dr	N 16th St	Sandra Ct	S	None/Gap	Local Road	15	No	No	4	264.137519
Roberta Dr	N 16th St	Stevens Ln	S	None/Gap	Local Road	15	No	No	4	503.054745
Roberta Dr	N 16th St	Stevens Ln	N	None/Gap	Local Road	15	No	No	4	264.631587
Roberta Dr	N 16th St	Stevens Ln	S	None/Gap	Local Road	15	No	No	4	243.682471
Roberta Dr	Stevens Ln	Stevens Ln	N	None/Gap	Local Road	15	No	No	4	165.13111
Roberta Dr	Stevens Ln	Stevens Ln	E	None/Gap	Local Road	15	No	No	4	876.980798
Roberta Dr	Stevens Ln	Stevens Ln	W	None/Gap	Local Road	15	No	No	4	922.904693
Roberta Dr	Stevens Ln	Stevens Ln	S	None/Gap	Local Road	15	No	No	4	490.022473
S 18th St	Apple Ln	Alexander Ave	W	None/Gap	Local Road	15	No	No	4	227.293735
S 18th St	Division St	Edith St	W	None/Gap	Local Road	15	No	No	4	298.995005
S 18th St	Edith St	Spruce St	W	None/Gap	Local Road	15	Yes	No	4	304.798289

Third and Fourth Priority Projects

Road Name	From	To	Side of Street	Rating	Functional Classification	Disadvantaged Area	Local Destination	Town Center	Priority	Length in Feet
S 18th St	Shomaker Dr	Apple Ln	W	None/Gap	Local Road	15	No	No	4	304.272986
S 18th St	Spruce St	Division St	E	None/Gap	Local Road	15	Yes	No	4	653.738599
S 19th St	Apple Ln	Alexander Ave	E	None/Gap	Local Road	15	No	No	4	289.768588
S 19th St	Division St	Brown Pl	W	Poor	Local Road	15	No	No	4	106.599032
S 19th St	Division St	Hardy St	E	Poor	Local Road	15	No	No	4	149.883908
S 19th St	Division St	Hardy St	E	Poor	Local Road	15	No	No	4	238.879666
S 19th St	Edith St	Division St	W	Poor	Local Road	15	No	No	4	309.229533
S 19th St	Edith St	Division St	E	Poor	Local Road	15	No	No	4	95.522729
S 19th St	Hardy St	Kennedy St	E	Poor	Local Road	15	No	No	4	279.131795
S 19th St	Kennedy St	Alexander Ave	W	None/Gap	Local Road	15	No	No	4	258.219086
S 19th St	Kennedy St	Alexander Ave	E	None/Gap	Local Road	15	No	No	4	257.201441
S 19th St	Spruce St	Edith St	W	Poor	Local Road	15	No	No	4	70.267716
S 19th St	Spruce St	Edith St	E	Poor	Local Road	15	No	No	4	72.556494
S 19th St	Walnut St	Spruce St	W	Poor	Local Road	15	No	No	4	300.851877
S 19th St	Walnut St	Spruce St	E	Poor	Local Road	15	No	No	4	142.00407
S 21st St	Clay St	Mccord St	E	None/Gap	Local Road	15	No	No	4	430.620839
S 21st St	Clay St	Mccord St	W	None/Gap	Local Road	15	No	No	4	316.44483
S 21st St	Dewey St	Clay St	W	Poor	Local Road	15	No	No	4	167.506592
S 21st St	Division St	Dewey St	W	None/Gap	Local Road	15	No	No	4	34.492732
S 21st St	Division St	Dewey St	E	None/Gap	Local Road	15	No	No	4	41.142001
S 21st St	Edith St	Division St	E	Poor	Local Road	15	No	No	4	294.537655
S 21st St	Mccord St	Alexander Ave	E	None/Gap	Local Road	15	No	No	4	186.888218
S 21st St	Mccord St	Alexander Ave	W	None/Gap	Local Road	15	No	No	4	300.354818
S 26th St	S 23rd St	Street End	S	None/Gap	Local Road	15	No	No	4	1807.553617
S 26th St	S 23rd St	Street End	N	None/Gap	Local Road	15	No	No	4	1861.243545
Sandra Ct	Roberta Dr	Street End	S	None/Gap	Local Road	15	No	No	4	707.378487
Sandra Ct	Roberta Dr	Street End	N	None/Gap	Local Road	15	No	No	4	660.121047
Somerset St	N 11th St	N 7th St	N	None/Gap	Local Road	15	No	No	4	951.869477
Spruce St	S 19th St	S 18th St	S	Poor	Local Road	15	No	No	4	181.816749

Third and Fourth Priority Projects

Road Name	From	To	Side of Street	Rating	Functional Classification	Disadvantaged Area	Local Destination	Town Center	Priority	Length in Feet
Spruce St	S 20th St	S 19th St	N	Poor	Local Road	15	No	No	4	46.278501
Stecher St	S 15th St	17th St	S	None/Gap	Local Road	15	No	No	4	569.499513
Stecher St	S 17th St	S 16th St	N	None/Gap	Local Road	15	No	No	4	319.827893
Stevens Ln	Roberta Dr	Roberta Dr	W	None/Gap	Local Road	15	No	No	4	654.728575
Stevens Ln	Roberta Dr	Roberta Dr	S	None/Gap	Local Road	15	No	No	4	149.117334
Stevens Ln	Roberta Dr	Roberta Dr	N	None/Gap	Local Road	15	No	No	4	148.459093
Stevens Ln	Roberta Dr	Roberta Dr	E	None/Gap	Local Road	15	No	No	4	948.849122
Stevens Ln	Roberta Dr	Roberta Dr	W	None/Gap	Local Road	15	No	No	4	267.735265
Synder Ln	N 16th St	Street End	S	None/Gap	Local Road	15	No	No	4	343.177488
Synder Ln	N 16th St	Street End	N	None/Gap	Local Road	15	No	No	4	342.805413
Tina Dr	S 17th St	Street End	S	None/Gap	Local Road	15	No	No	4	768.999065
Tina Dr	S 17th St	Street End	N	None/Gap	Local Road	15	No	No	4	764.879624
Wall St	N 20th St	N 19th St	N	Poor	Local Road	15	No	No	4	125.523473
Wall St	N 20th St	N 19th St	S	Poor	Local Road	15	Yes	No	4	148.866913
Wall St	N 20th St	N 19th St	S	Poor	Local Road	15	No	No	4	54.349061
Wall St	N 22nd St	N 21st St	N	Poor	Local Road	15	No	No	4	67.655906
Wall St	N 22nd St	N 21st St	N	Poor	Local Road	15	No	No	4	48.425512
Wall St	N 22nd St	N 21st St	N	Poor	Local Road	15	No	No	4	48.9926
Wall St	N 22nd St	N 21st St	S	Poor	Local Road	15	No	No	4	55.628964
Wall St	N 22nd St	N 21st St	S	Poor	Local Road	15	No	No	4	68.690973

OTHER PLANS, REPORTS, AND GUIDES

JACKSON COUNTY RESOURCES

Murphysboro Comprehensive Plan, City of Murphysboro

<https://wsil.images.worldnow.com/library/9315d960-a719-46a0-be7e-675035b2dacd.pdf>

Rural Planning Playbook, Jackson County Health Department

http://www.jchdonline.org/images/jchd_data/health-ed/Rural_Planning_Playbook_2019_FINAL.pdf

Community Health Improvement Plan, Jackson County Health Department

http://www.jchdonline.org/images/jchd_data/admin-support/iplandocument2015-2020.pdf

STATEWIDE RESOURCES

Complete Streets Rural Networks, Active Transportation Alliance

<https://atpolicy.org/resources/design-guides/complete-streets-rural-contexts/>

Prioritizing Equity through Complete Streets, the University of Illinois at Chicago

<https://www.ihrp.uic.edu/files/EquityBrief-Nov2016.pdf>

A Master Plan for Sidewalks, City of Bloomington, IL

<https://www.cityblm.org/home/showdocument?id=7013>

NATIONAL RESOURCES

Creating Walkable Communities: A Guide for Local Governments, Mid-America Regional Council

https://safety.fhwa.dot.gov/ped_bike/docs/marc.pdf

Steps to a Walkable Community: A Guide for Citizens, Planners, and Engineers; America Walks

<http://americawalks.org/wp-content/uploads/2014/12/261463434-Steps-to-a-Walkable-Community.pdf>

Small Towns and Rural Multi-Modal Networks, Federal Highway Association

https://www.fhwa.dot.gov/environment/bicycle_pedestrian/publications/small_towns/fhwahep17024_lg.pdf