

CHICAGO'S BUS FRIENDLY STREETS: ROUTE REPORT CARDS

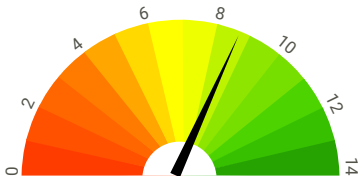
80 IRVING PARK

D

RIDERSHIP 11,204 /DAY
FREQUENCY ABOUT 8 /HOUR

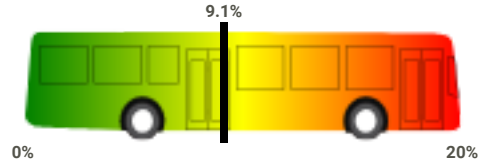
WARDS INCLUDE 33, 35, 38, 39, 44, 45, 46, 47

Average Speed of 8.9 MPH



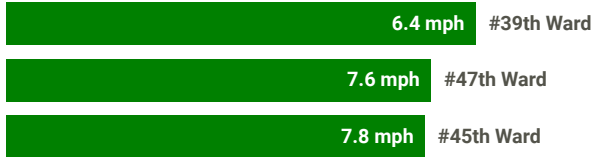
D

Approximately 9.1% of buses bunched

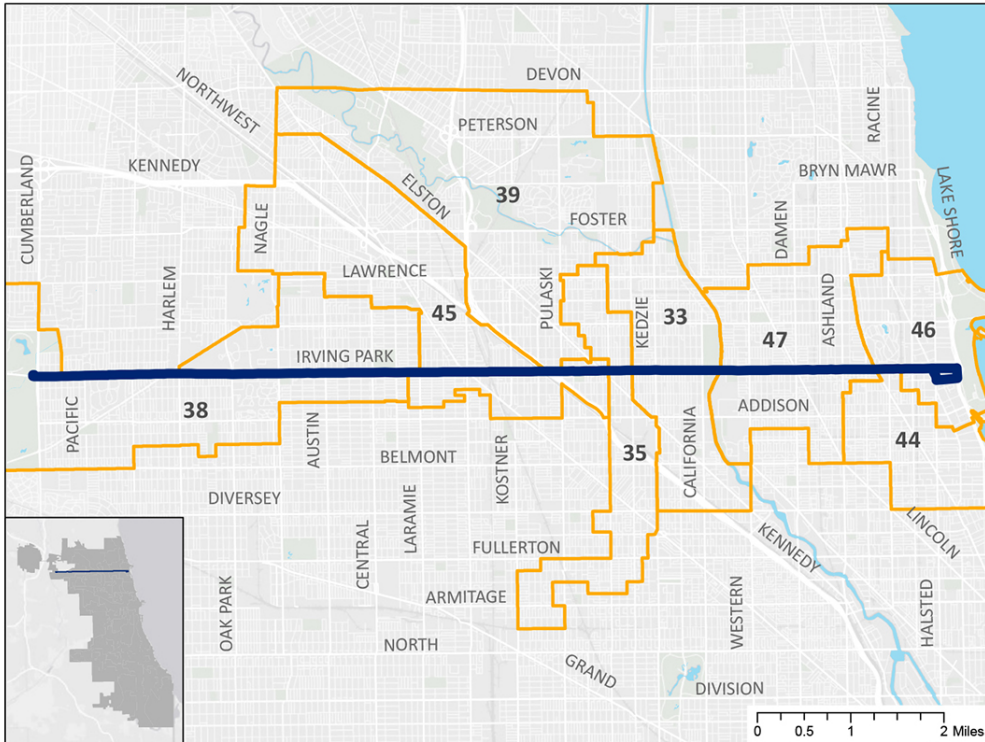
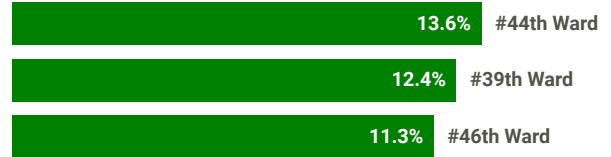


D

Slowest Segment



Most Bunching



Solution: Prioritize Buses on City Streets

Every day, Chicagoans take 826,322 rides on our city's buses, connecting them to jobs, schools, healthcare, and other services while taking up far less space than cars. Too often these buses are getting stuck in traffic and service is slow and unreliable. Ways to improve bus service now:

- Add more bus lanes with effective and equitable enforcement
- Speed up boarding with tap and go payment at all doors
- Give buses priority at traffic lights



TransitCenter

Interested in this methodology? Want to learn more about the campaign? Go to activetrans.org/busreportcards or contact **Julia Gerasimenko** at julia@activetrans.org or 312-216-0489. #backonthebus